

## Which Claret Civil Engineering business are you?

*Claret Lining Division*

## Who was the customer (only if you want them to feature in the article)?

*Groupbridge Ltd working for the National Trust.*

## The History.



*Paycockes Cottage in Coggeshall is a Tudor Merchant Property that was built in 1509 by Thomas Paycocke.*

*Owner, Thomas, wanted to impress using the latest fashions within the building. As a clothier, he would have been well travelled across Europe and similarities with French and Italian architecture suggest he may have employed craftsmen he met from the continent in its build.*

*The land at the rear incorporated into the garden today, was once part of Thomas's business premises. A cart-way, built in the second phase of construction, allowed the goods in wagons to be transported from the road to the yard and Tudor outbuildings at the back of the house.*

*These would have included stables, a dovecote and possibly a kitchen. Tudor kitchens were always separate from the main building due to the risk of fire.*

*In 2008, when Paycocke's last tenant moved out, the garden had suffered from long-term neglect, but clearly had lots of potential.*

*Starting out as an industrial yard and evolving over the years into a beautiful Arts and Crafts garden at the start of the 20th century under Conrad and Miriam Noel, it was on the brink of being lost.*



*A volunteer gardening team and custodian set about drawing up a new vision for the garden, taking inspiration from the Arts and Crafts movement and featuring plants that would have been used over the previous five centuries of the house's existence.*

*With the benefit of a bequest and funding from the National Trust, they've transformed this once-neglected garden into a glorious vision of colour, making it a key spot to seek out during a visit.*



### **The Problem.**

*National Trust had turned this site of heritage into a focal point for Cogglesham with customer facilities such as a shop and public toilets. The new additions to this prestigious property meant there was a need to look at other parts of the infrastructure such as the sewer network.*

*Groupbridge, working on behalf of the National Trust, carried out an extensive survey of the sewer network to identify the current service condition. The conclusions were that there was considerable displaced joints and root intrusions to causes concern for future blockages.*



### **What was the resolution?**

*Groupbridge engaged with their preferred NO-DIG trenchless contractor, Claret Civil Engineering Ltd, to provide solutions and carry out the works at Paycockes Cottage.*

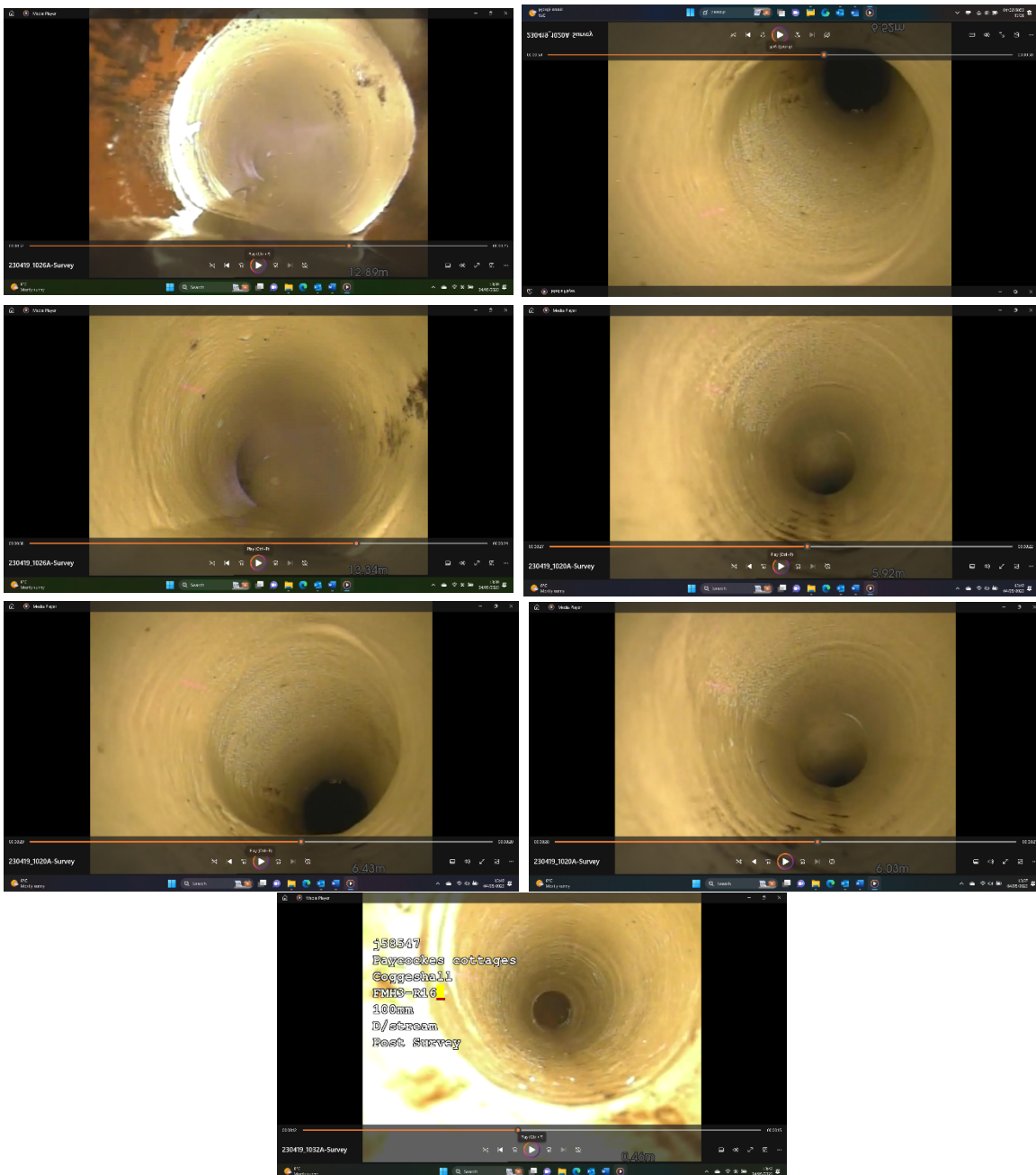
*The solution would be to provide structural segmental repairs (patches), to cover the displaced joints to have a smoother transition for residual flows with free-flowing solids. and that the root intrusions would be removed with specialist milling equipment followed by a structural patch to prevent further root intrusions from happening again.*

St Botolph's Lane, Bury St Edmunds, Suffolk IP33 2AX.

Web: [www.claretce.com](http://www.claretce.com) | Phone: 01284 333222.

*The works were planned over a two-day period and during a shut down period of the house from the public. A total of 3No. x tap roots were removed and 8No. x 100mm patches were installed.*

**Post Survey Pictures of Patch Lings:**



*All works completed as per the identified solutions and on budget.*